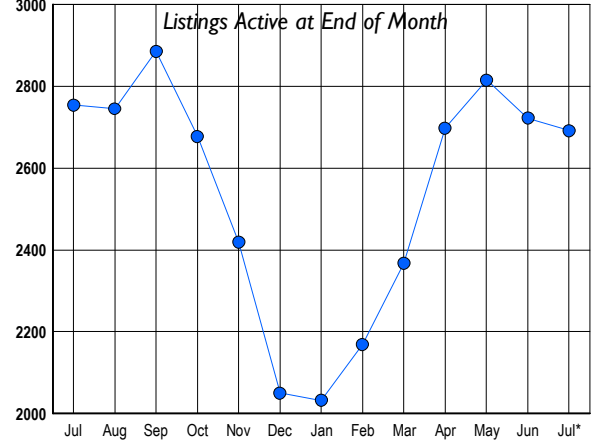




LISTINGS

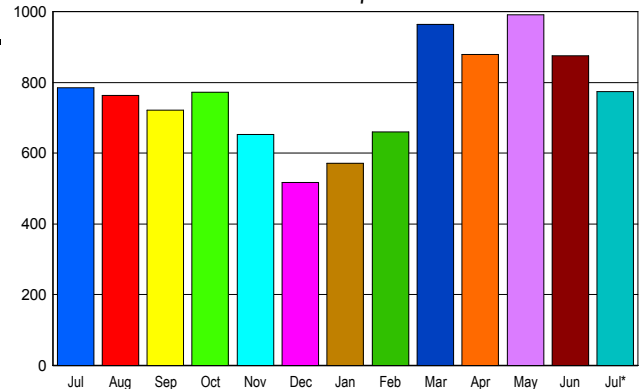
Prices Range	New This Month			Total Actives		
	2011	2010	% Change	2011	2010	% Change
0 - 149,999	17	34	-50.0	33	39	-15.4
150,000 - 199,999	46	90	-48.9	82	127	-35.4
200,000 - 299,999	147	212	-30.7	347	445	-22.0
300,000 - 399,999	208	211	-1.4	522	528	-1.1
400,000 - 499,999	116	144	-19.4	367	369	-0.5
500,000 - 599,999	115	104	10.6	317	250	26.8
600,000 - 699,999	79	112	-29.5	234	246	-4.9
700,000 - 799,999	64	63	1.6	169	133	27.1
800,000 - 899,999	44	48	-8.3	135	102	32.4
900,000 - 999,999	32	29	10.3	78	72	8.3
1,000,000 - 1,249,999	36	32	12.5	101	99	2.0
1,250,000 - 1,499,999	20	29	-31.0	96	100	-4.0
1,500,000 +	32	33	-3.0	210	244	-13.9
TOTALS	956	1141	-16.2	2691	2754	-2.3

INVENTORY TREND



SALES TREND

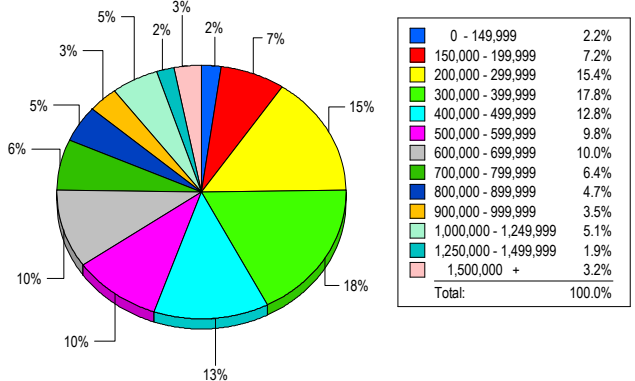
Contracts Ratified Per Month



CONTRACTS

Price Range	New This Month			Year-To-Date		
	2011	2010	% Change	2011	2010	% Change
0 - 149,999	19	44	-56.8	184	220	-16.4
150,000 - 199,999	76	66	15.2	421	446	-5.6
200,000 - 299,999	179	153	17.0	1,038	1,143	-9.2
300,000 - 399,999	148	144	2.8	947	1,090	-13.1
400,000 - 499,999	94	113	-16.8	649	756	-14.2
500,000 - 599,999	64	67	-4.5	485	527	-8.0
600,000 - 699,999	51	64	-20.3	398	472	-15.7
700,000 - 799,999	41	43	-4.7	302	293	3.1
800,000 - 899,999	23	24	-4.2	176	216	-18.5
900,000 - 999,999	23	18	27.8	115	131	-12.2
1,000,000 - 1,249,999	20	20	0.0	169	147	15.0
1,250,000 - 1,499,999	17	14	21.4	118	122	-3.3
1,500,000 +	19	15	26.7	149	111	34.2
TOTALS	774	785	-1.4	5151	5674	-9.2

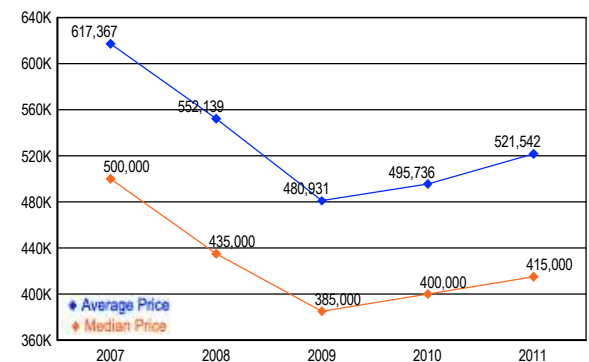
MARKET BY PRICE RANGE



SETTLEMENTS

Price Range	New This Month			Year-to-Date		
	2011	2010	% Change	2011	2010	% Change
0 - 149,999	16	19	-15.8	145	166	-12.7
150,000 - 199,999	52	38	36.8	307	352	-12.8
200,000 - 299,999	111	121	-8.3	847	1,030	-17.8
300,000 - 399,999	128	119	7.6	824	1,005	-18.0
400,000 - 499,999	92	81	13.6	583	652	-10.6
500,000 - 599,999	71	62	14.5	425	476	-10.7
600,000 - 699,999	72	82	-12.2	381	409	-6.8
700,000 - 799,999	46	43	7.0	256	287	-10.8
800,000 - 899,999	34	33	3.0	176	184	-4.3
900,000 - 999,999	25	22	13.6	94	105	-10.5
1,000,000 - 1,249,999	37	35	5.7	176	154	14.3
1,250,000 - 1,499,999	14	17	-17.6	83	84	-1.2
1,500,000 +	23	19	21.1	118	87	35.6
TOTALS	721	691	4.3	4415	4991	-11.5

AVERAGE & MEDIAN PRICE



DATA SOURCE: Metropolitan Regional Information Systems, Inc. (MRIS)

NOTES: Properties not listed through this Multiple Listing Service are not reflected. The term "sales" represents ratified purchase contracts. Current year information is preliminary and subject to revision. Current year- to- date contract information may not equal the sum of the monthly contract totals reported in